

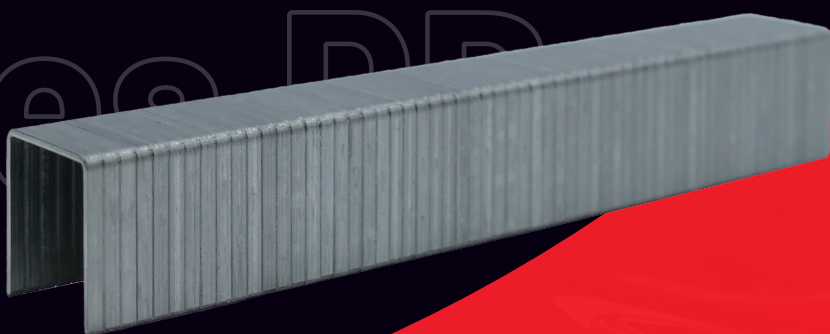


FICHE TECHNIQUE

Agrafes PB

Agrafes - Série PB

Pour l'assemblage de cartons et de feuilles.



6 - 12 mm



11,30 mm



0 55, x 1,25
mm

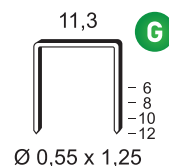
Galvanisée **G**



Agrafes PB | FICHE TECHNIQUE

Description technique

Largeur	11,30 mm
Diamètre du fil	0,55 x 1,25 mm
Longueurs	6 à 12 mm
Matériaux support	Bois



Applications

Assemblage de feuilles et de catons







Compatibilités

Rapid 73 - Novus D-53 F - JK 34

Produit associé

PINCE 12

Tailles disponibles

Code	Désignation			kg/ 	 (N)*	 (N)*	Classe EUROCODE 5
 6PB061	P-06	5 000	120 000	13	-	-	2 (galva)
6PB081	P-08	4 300	51 600	6	-	-	2 (galva)
6PB101	P-10	3 360	40 320	6	-	-	2 (galva)
6PB121	P-12	2 880	34 560	6	-	-	2 (galva)